



Jindal Ceramica is the provider of building materials (*clay facing bricks, floor tiles & hollow blocks*) located at Jhajjar, Haryana. We started our journey as a traditional brick manufacturer in 1970s when there was minimal machinery involved in brick-making.

We made hand crafted products through the best-suited materials from the earth, water, and fire. We envisioned the urban and modern design back in the 90's and started manufacturing machine-made bricks which are ideal to be left exposed and do not require plaster or paint.

In our 5 decades old family business, the experience and expertise of brick making has passed on to generations. Ever since our inception, we have been striving to meet unique needs of architects, builders, and homebuyers. We keep pushing our boundaries of the scope of customisation to offer avant-garde solutions for the modern-day lifestyle.

WHAT MAKES US UNIQUE

Jindal Ceramica makes customisable & superior quality products through the process of Extrusion. 'Extrusion' is a process where the raw material is pushed through a dye and a slab extrudes out. Sections of the desired length are then cut off with wires.

JC has gone a step further in its endeavour to achieve sustainability in production by adapting to natural gas instead of conventional solid fuel for the brick kiln firing process at its factory operations in Jhajjar, Haryana. The factory affirms the usage of robotics and state-of-the-art technology and has extremely energy-efficient manufacturing processes.

Benefits Of Using Natural Gas For Brick Kiln Firing :



Higher fuel efficiency, reducing ***Carbon Monoxide*** emission by > 75%



Reduction in ***Carbon Dioxide*** emissions by > 40%



Zero particulate matter emission during ***Firing Process***



Health & Safety of our employees and the communities in the vicinity



Consistent and higher quality of the ***Fired Bricks***

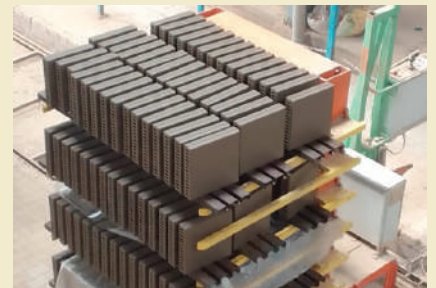


OUR COMMITMENT TO QUALITY & SUSTAINABILITY

As a part of the '**Make in India**' movement, we manufacture all our products in India and aim to empower the country through our contributions. Our superior quality products are now setting new benchmarks of innovation and quality that set new standards of excellence for the entire industry.

We can proudly say that we believe in making our deliverables eco-friendly and sustainable to ensure that we minimize the carbon footprint to make way for a livable and resource-rich future.

Satya Pal Jindal, the Founder of the Jindal Group, has envisioned making and delivering sustainable building products through resource efficient and eco-friendly processes so that the world can have a secure sustainable future.





CLADDING TILES

The Perfect Brick Wall.

Cladding Tiles are the answer to the perfect brick wall quest. We manufacture them through the 'Extrusion' method using the latest European machines & technologies. The raw materials are thoroughly tested and processed in a systematic way so that the finished products have the best quality. They're available in different colors and are delivered in perfect packaging. The wall tiles are ideal for the interior as well as exterior.

Key Features Of Cladding Tiles:



Timeless Beauty

They never age & last through centuries like the aqueducts in Rome. Brick is the material of past, present & future.



Zero Maintenance

Brick products never fade. Therefore, you will never need to paint and will hardly ever have to clean the walls.



Sustainability

Our products are long-lasting and recyclable even after many years. Hence, reducing the waste.



Easy Application

Cladding tiles can be installed on top of an existing wall with simple cement mortar or adhesive.



Time & Cost Saving

Just rough plaster the brick wall and paste the tiles with mortar or adhesive. Their endurance & resilience make them cost-effective in the long run.

OUR PRODUCTS:



Terracoltta 9x2



Chocolate Tile 9x2



Terracotta Tile 9x3



Beige 9x3



Linear Tile 9x3



Fine Trace 9x3



Mud Antique 9x3



Antique Terracotta 9x3

COLOR PALETTE:

| TYPE | DIMESIONS | | | Pcs/Sqft | Pcs/Sqm |
|---------------------|-----------|----|-------|----------|---------|
| | L | W | H | | |
| WALL CLADDING TILES | 9" | 3" | 14 mm | 5.33 | 57.21 |
| WALL CLADDING TILES | 9" | 2" | 14 mm | 8 | 86.96 |

HANDMADE CLAY TILES

The Perfectly Imperfect Tiles.

Handmade clay tile is an inspiration from the century-old clay walls that characterized simplicity and naturalness.

The production process of handmade tiles is different from the machine made tiles. Each tile depicts the artistic vision of the mason, with extra careful handling, long production times and unique craft values.

Antiquely cultured with an uneven surface gives an impression of artisanal, worn-out bricks creating a timeless addition to your interiors. Use Jindal Ceramica's handmade tile to revamp indoor accent walls, TV unit panels, balconies, and entryways.



Chocolate



Beige Antique



Terracotta



Graphite Grey



Beige

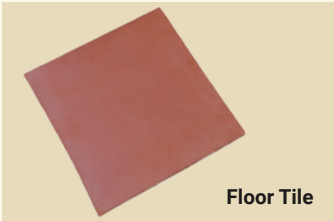


FLOOR TILES

Chamfering floor tiles are attractive solutions for all areas, including terraces, steps & pools. They give an exciting look and feel. Use these fashionable tiles for contemporary creativity in every setting. They can make your living rooms, halls, and bathrooms aesthetic and more attractive. Chamfered floor tiles are the perfect combination of strength and warmth. They are very strong and are not easily breakable.



Terracotta Step Tile



Floor Tile

| PRODUCT TYPE | SIZE (mm) | WEIGHT (kg) |
|-----------------|------------|-------------|
| FLOOR TILE | 320X320X15 | 2.7 |
| INDUSTRIAL TILE | 320X320X25 | 6.4 |
| STEP TILE | 330X330X20 | 4.5 |

Our Product Range:

Floor Tile

Step Tile

Industrial Tile



FACE BRICK

Face brick is the term used for the bricks that are needed not just for the structure, but also for aesthetics, energy efficiency, and value. The intention is to leave these bricks bare and unadorned on the walls of the building. High-performance, high-temperature-resistant bricks with unique hues are what you get here. From residential homes to commercial buildings, face bricks are often employed on a diverse array of structures.

COLOURED BRICKS ARE MADE ON ORDER

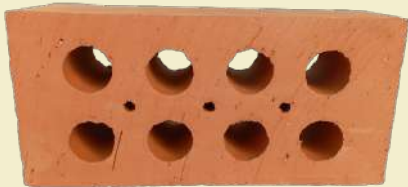
| | | | |
|-----------|------------|-------|-----|
| Chocolate | Terracotta | Beige | Mud |
|-----------|------------|-------|-----|

MULTI HOLE
BRICK



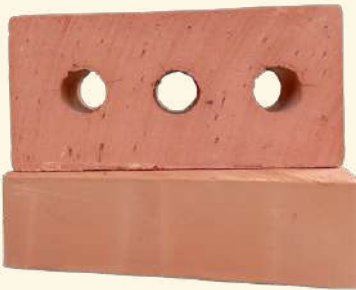
240x110x70 mm

8 HOLE
BRICK



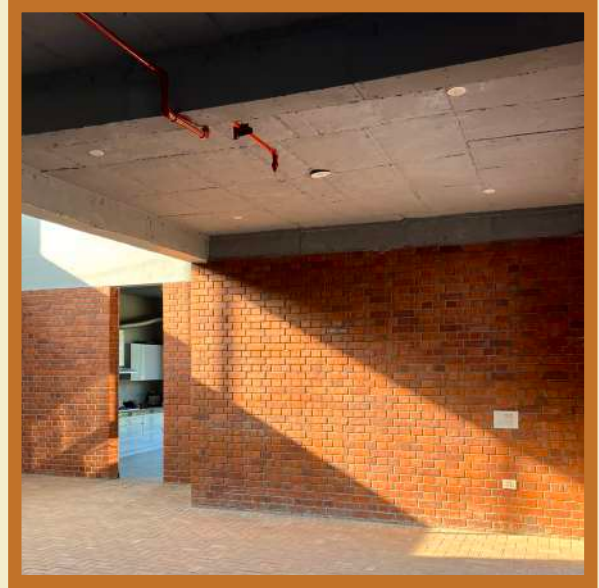
245x115x70 mm

3 HOLE
BRICK



242x115x70 mm

| PRODUCT | SIZE | WEIGHT | COMPRESSIVE STRENGTH | WATER ABSORPTION | PERFORATION | EFFLORESCENCE |
|------------------|--------------|--------|-------------------------|------------------|-------------|---------------|
| 3 HOLE BRICK | 242x115x70mm | 3.4 Kg | >250 kg/cm ² | <11% | >12% | negligible |
| MULTI HOLE BRICK | 240x110x70mm | 2.4 Kg | >250 kg/cm ² | <11% | >40% | negligible |
| 8 HOLE BRICK | 245x115x70mm | 2.8 Kg | >250 kg/cm ² | <11% | >9.90% | negligible |



ADVANTAGES



Higher compressive strength: Higher compaction achieved by the use of European technology and firing temperature of multi hole bricks at about 1000 degree Celsius, provides higher compressive strength as compared to the conventional bricks.



Less dead load: Multi hole bricks are lighter than ordinary bricks, thus, they drastically reduce the dead load on the structures allowing you to go for a lighter framework and helping you to cut down on steel and other building material.



Green Building Product: The Multi hole bricks are 100% natural walling material, rated by the Green Building Council of India - 40% less clay is used to make hollow blocks than conventional bricks. It makes hollow blocks a green building material.



Thermal Insulation: The perforations in the brick entraps air and deliver thermal insulation. They keep the interior areas cool in summer and warm in winter.



Timeless Beauty: Multi hole bricks are face bricks that are meant to be left exposed. Because of clay building material's incredible longevity, flexibility and permanent colour, it looks great on historical colonial structures and on sleek contemporary office buildings.



Forget about the maintenance: Brick products never fade. Therefore, you will never need to paint and will hardly ever have to clean the walls. Compare a brick home with others and soon you'll realize how much money, effort and time brick home owners save

WHY DO HOLLOW BRICKS GIVE YOU BETTER VALUE FOR MONEY THAN CONVENTIONAL BRICKS?

| Hollow Bricks | VS | Conventional Bricks |
|---|---|--|
| <p>Multi hole bricks are perforated and approx. 30% lighter.</p> <p>Light weight of multi hole bricks allows savings on structural cost due to a reduction in dead load. Saves substantial money, time, and labour.</p> <p>The modular size of the bricks helps optimise the number of bricks required for construction.</p> <p>Multi hole bricks are used at the wall facade since its water absorption is less than 11%. It doesn't require plaster, pop, paint and any sort of maintenance.</p> <p>The uniform size of these bricks makes handling and installation very easy and quick. The perforation allows easy chassing and chiselling for plumbing and electric channels.</p> <p>The lightweight of these bricks helps save transportation costs.</p> | <p>Composition & weight</p> <p>Dead Load</p> <p>Modularity</p> <p>Plaster, POP, Paint, Maintenance</p> <p>Installation</p> <p>Transportation cost</p> | <p>Made of dense material without any voids and are heavier.</p> <p>More dead load causing more structural costs, more construction time and labour costs.</p> <p>The dimensions of traditional bricks vary from brick to brick. Increase in wastage and labour costs.</p> <p>After the application of conventional bricks, plaster, pop , paint and recurring maintenance is required.</p> <p>Rough surfaces and irregular size of these bricks makes construction difficult and time consuming.</p> <p>Heavier; making transportation expensive.</p> |

PERFORATED CLAY HOLLOW BLOCKS

The Hollow blocks are designed to provide cost- effective wall construction along with better efficiency, durability, ease of handling , thermal insulation and plenty of other benefits. These blocks are of two types:

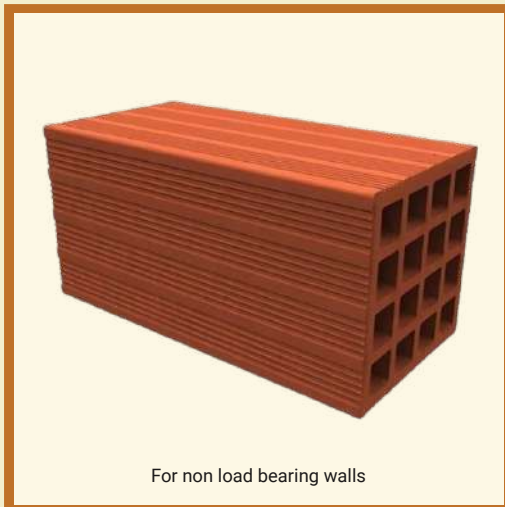
Non-Load Bearing Clay Hollow Blocks (Horizontal perforation) and Load Bearing Clay Hollow Blocks (Vertical perforation).

- **Non-load bearing wall solution**

The Horizontally Perforated Clay Hollow Blocks are primarily used as infill masonry for non load bearing wall construction. The product is especially beneficial for high rise apartment buildings, Houses, Hospitals, Educational Institutions, Commercial Buildings etc.

- **Load-bearing wall solution**

The Vertically Perforated Clay Hollow Blocks are ideal for up to Ground+1 floors. The high compressive strength of these blocks enables the load bearing construction. This concept eliminates the columns which helps save the structural costs. These blocks can also be an excellent replacement to AAC blocks and conventional bricks.



HERE'S WHAT MAKES HOLLOW BLOCKS THE BEST CHOICE FOR INFILL WALLS:



Thermal and Sound Insulation

Perforations in hollow blocks entrap air and provide excellent thermal insulation that's 45% better as compared to conventional walling material. They keep the interior areas cool in summers and warm in winters. The perforation in the blocks act as a soundproofing system.



Green Building Product

The hollow blocks are 100% natural making the blocks a natural walling material; 40% less clay is used to make horizontal hollow blocks than conventional bricks. It makes hollow blocks a green building material.



Precision in Design

The wastage of blocks is as low as 2%, which means you can optimise the number of blocks required for construction.



Low water absorption

Clay Hollow blocks are fired at **1000 degree celcius** and have **<11%** water absorption that prevents water seepage into the building and dampness on the walls. Thus low risk of dampness or cracks on walls



Strength & Ease of Use

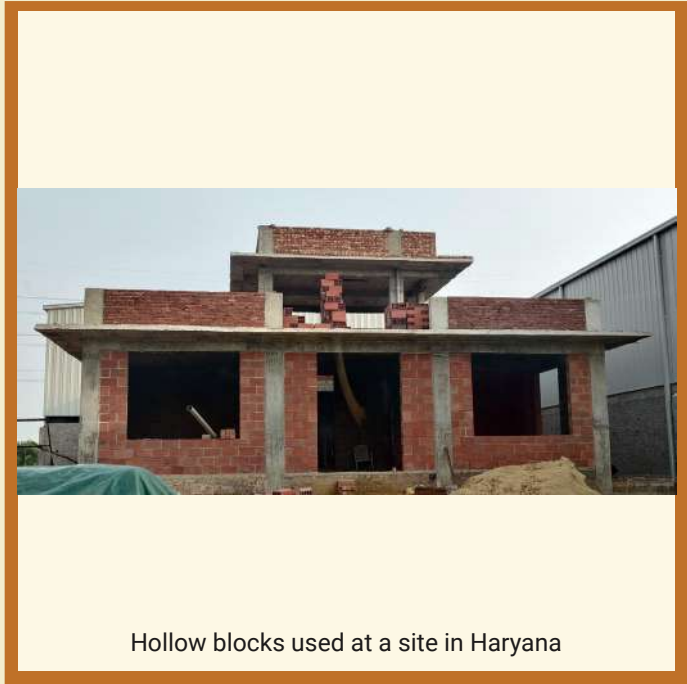
High strength due the vertical perforations which means improved productivity in masonry. It's also easy to chase and chisel for electrical and plumbing conduits making it simple to install all types of fixtures.



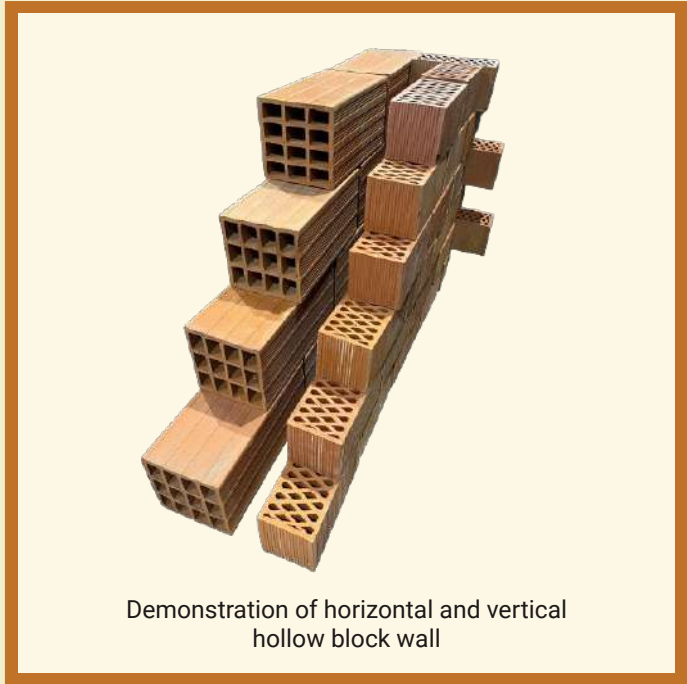
Light weight & faster construction

Perforated clay hollowblocks are more than 50% lighter than conventional walling material thus allowing substantial savings on structural cost due to reduction in dead load.

| PRODUCT | SIZE | WEIGHT | COMPRESSIVE STRENGTH | WATER ABSORPTION | PERFORATION | EFFLORESCENCE |
|-------------------------|---------------|---------|-------------------------|------------------|-------------|---------------|
| VERTICAL HOLLOW BLOCK | 280x135x130mm | 5.5 Kg | >100 kg/cm ² | <11% | 26% | negligible |
| VERTICAL HOLLOW BLOCK | 280x70x130mm | 2.8 Kg | >100 kg/cm ² | <11% | 26% | negligible |
| VERTICAL HOLLOW BLOCK | 280x205x130mm | 8.3 Kg | >100 kg/cm ² | <11% | 26% | negligible |
| HORIZONTAL HOLLOW BLOCK | 100x200x400mm | 7.8 Kg | >35 kg/cm ² | <11% | >45% | negligible |
| HORIZONTAL HOLLOW BLOCK | 150x200x400mm | 11.5 Kg | >35 kg/cm ² | <11% | >45% | negligible |
| HORIZONTAL HOLLOW BLOCK | 200x200x400mm | 12.4 Kg | >35 kg/cm ² | <11% | >45% | negligible |



Hollow blocks used at a site in Haryana



Demonstration of horizontal and vertical hollow block wall

BREEZE BLOCK (JAALI)

Picture a wall that lets optimum light and air pass through, keeping the space warm and airy - Breeze blocks offer just that! The breeze blocks are used to build patterned, non-structural, hollow block walls. They are also used to construct ventilated walls, partition walls, half walls, and more. Because of their aesthetic look, they are widely used in residential and commercial designs. Breeze Blocks give a unique appeal to walls, partitions, fences and indoor and outdoor decorations.



Key Features Of Breeze Block (Jaali):

-  Ever-lasting beauty
-  Architectural feature wall
-  Suitable for both indoor and outdoor use. Perfect for connecting the two spaces together
-  Ideal for creating privacy without closing rooms off while providing ventilation
-  Made from non combustible materials making them fire resistant

Technical Specifications:

| Dimension (mm) | Weight Of Each Block |
|-----------------------|------------------------------|
| 200x200x60 | 3 kg |
| Packaging Details | Pieces Per sqft |
| 4 Blocks Per Pack | 2.25 |
| Dimensional Stability | Available Colours |
| +/- 5mm | Terracotta, Chocolate, Beige |





📍 Silani Pana Zalim, Jhajjar, Haryana

📞 +91 8076632238

✉️ info@jindalceramica.com

🌐 www.jindalceramica.com